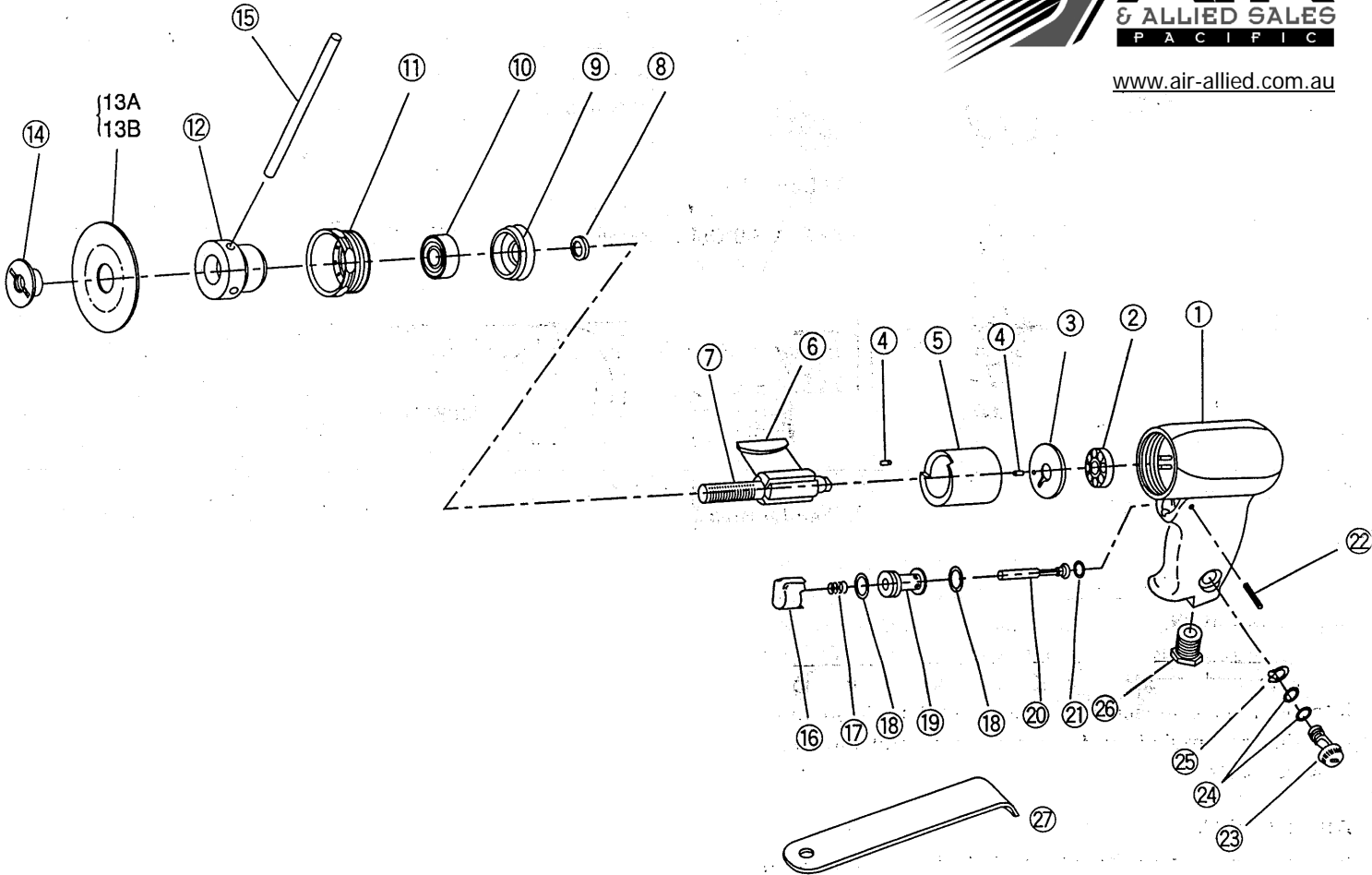


# MAINTENANCE INSTRUCTIONS DISK SANDER MODEL MS-4125B

# TOKU

TOKU PNEUMATIC PRODUCTS

## Exploded View



**AIR**  
& ALLIED SALES  
PACIFIC  
[www.air-allied.com.au](http://www.air-allied.com.au)

Sym. No.	Parts No.	Q'ty. No.	Description	Sym. No.	Parts No.	Q'ty. No.	Description
1	T5-06-74-010	1	Housing	14	T5-06-74-140	1	Disk Nut
2	T5-02-13-050	1	Bearing(6201Z)	15	T5-06-74-150	1	Holding Wrench
3	T5-06-74-030	1	Rear Plate	16	T5-06-74-160	1	Trigger
4	T5-02-10-470	2	Spring Pin(2.5x5)	17	T5-06-74-170	1	Spring 5901/600
5	T5-06-74-050	1	Cylinder	18	T5-02-10-380	2	O-Ring(P-11)
6	T5-06-74-060	4	Rotor Blade	19	T5-06-74-190	1	Valve Body
7	T5-06-74-070	1	Rotor	20	T5-02-10-360	1	Valve Stem
8	T5-06-74-080	1	Spacer	21	T5-06-30-090	1	O-Ring(2x4)
9	T5-06-74-090	1	Front Plate	22	T5-02-10-410	1	Spring Pin(2.5x20.5)
10	T5-06-74-100	1	Bearing(6000)	23	T5-06-74-230	1	Regulator
11	T5-06-74-110	1	Lock Nut	24	T5-04-02-040	2	O-Ring(P-5)
12	T5-06-74-120	1	Disk Holder	25	T5-06-74-250	1	Retaining Ring (S-9)
13A	T5-06-74-13A	1	Backing Plate 3"x17	26	T5-06-74-260	1	Inlet Bushing
13B	T5-06-74-13B	1	Backing Plate 4.5"x17	27	T5-06-74-270	1	Spanner